

what's on

IN REYKJAVÍK

NOVEMBER 2007

Culture & art
Event calendar
Daytrip – Lava Tour
Your Guide to an Icelandic Winter
The Imagine Peace Tower
How to spend a day in Reykjavík
Wining & dining
Practical Information
Map of Reykjavík



heimur

Blue Lagoon Shop

Laugavegur 15, Reykjavík

Gifts of nature
from the geothermal Blue Lagoon

Season's selection

Special care

WWW.BLUELAGOON.COM

www.bluelagoon.com

BLUE LAGOON
ICELAND

Reykjavík
871 ±2

Landnámssýningin
The Settlement
Exhibition

Treasure chest



Experience Viking-Age Reykjavík at the new Settlement Exhibition. The focus of the exhibition is an excavated longhouse site which dates from the 10th century AD. It includes relics of human habitation from about 871, the oldest such site found in Iceland.

Multimedia techniques bring Reykjavík's past to life, providing visitors with insights into how people lived in the Viking Age, and what the Reykjavík environment looked like to the first settlers.

The exhibition and museum shop are open daily 10–17

Aðalstræti 16
101 Reykjavík / Iceland
Phone +(354) 411 6370
www.reykjavikmuseum.is



Reykjavík
City Museum

The Settlement Exhibition
Reykjavík 871 ±2 and Árbæjarsafn
are parts of Reykjavík City Museum



Listasafn Reykjavíkur
Reykjavik Art Museum



2 November 2007 – 27 January 2008

Hreinn Friðfinnsson

Kjarvalsstaðir



Hreinn Friðfinnsson is initiated and produced by
Serpentine Gallery, London

Open daily 10-17. Free entrance on Thursdays.

One admission ticket is valid for three days in Hafnarhús,
Kjarvalsstaðir and Ásmundur Sveinsson Sculpture Museum.



Morgunblaðið



www.listasafnreykjavikur.is

listasafn@reykjavik.is

sími +354 590 1200

fax +354 590 1201

what's on in REYKJAVÍK

www.whatson.is

contents

november 07

Daytrip – Lava Tour	6
The Imagine Peace Tower	8
Your Guide to an Icelandic Winter	10
Event calendar	12
Ongoing exhibitions	18
Einar Jónsson Museum	23
Reykjavík in a splash.....	24
Culture & arts.....	26
Hafnarfjörður - Capital area	32
Wining & dining.....	34
Restaurant of the Month	41
Eating out	44
Clubs and Bars down town Reykjavík....	45
How to spend a day in Reykjavík	46
Practical Information.....	48
Hotels & guesthouses	52
Map of Reykjavík City Centre	53
Map of Reykjavík.....	54

Dear Visitor

Welcome to Iceland and its capital city. Reykjavík has been called Europe's coolest capital due to the famed and energetic nightlife. This small cosmopolitan city is just as much part of the Icelandic experience as the midnight sun or the magical landscapes forged by ice and fire. But there is more to Reykjavík than pubs and clubs, nature is also to be found within the city itself; whether one is in the mood for a spot of midnight golf, horse trekking, whale watching or salmon fishing, there is no need to travel long distances as all these choices and many more are within one's reach. Another must for all visitors is dining out on specialities including delicious seafood, ocean fresh from the morning's catch and highland lamb - purely natural food served at the numerous high quality restaurants in the city. Enjoy your stay in Reykjavík.

Ingvar Kristjánsson, editor



Volume 24 • Issue 10 • Published by HEIMUR HF. • Borgartún 23, 105 Reykjavík. Tel.: +354 512 7575, fax +354 561 8646
E-mail: ingvar@heimur.is

Editor: Ingvar Kristjánsson, ingvar@heimur.is, tel.: 660 6712 • Layout: Sjonni, sjonni@heimur.is / erlingur@heimur.is / ARGH! ehf.
Photos: Páll Stefánsson, Rafn Hafnfjörð, Páll Kjartansson, Áslaug Snorradóttir, Jón Baldur Hliðberg, Guðmundur Ingólfsson & other sources • Printing house: Ásprent-Still ehf. Akureyri.

WHAT'S ON IN REYKJAVÍK is published eleven times a year covering in and around Reykjavík. Please note that while every effort has been made to ensure the information presented is accurate, should prices, times, dates or other information change or be found inaccurate the publisher accepts no liability whatsoever.

Opinions expressed in WHAT'S ON IN REYKJAVÍK are those of the individual authors.

Cover photo: Jónas Björgvinsson

Lækjarmörk ... well known
for their Icelandic cuisine



GOURMET SEAFOOD
MOUNTAIN LAMB
LOBSTER FEAST
FISH BUFFET
GROUP MENU
WINE AND DINE

Located in Reykjavík
city center

For reservations
please call
551 4430
open daily
11:00-24:00

Lækjarmörk

Restaurant

BANKASTRÆTI 2 • 101 REYKJAVÍK

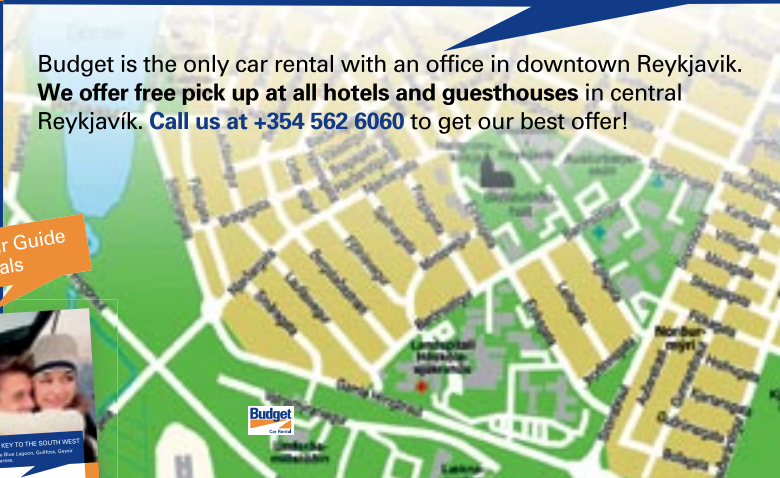
TEL.: 551 4430 • FAX: 552 8684

www.lækjarmörk.is / veitingar@lækjarmörk.is

Budget Close to you!

Budget is the only car rental with an office in downtown Reykjavík.
We offer free pick up at all hotels and guesthouses in central
Reykjavík. **Call us at +354 562 6060** to get our best offer!

Free CD Tour Guide
with all rentals



Tel: +354 562 6060

www.budget.is



DAYTRIP OF THE MONTH - Lava Tour

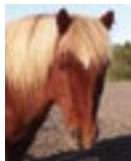
An adventurous ride from the Íshestar Riding Centre into the lava fields surrounding Mt. Helgafell volcano and the Kaldársel area, or to Lake Hvaleyrvatn. Ride through strange lava fields on excellent riding tracks and see how the formation of new vegetation takes place on and around the lava, maybe you will be able to spot a troll or two. The beautiful Bláfjöll Mountains rise on the horizon. The horses suit both the beginner and the more advanced rider and all riders are provided with a riding helmet,

warm overall / raingear and rubber boots. You can also enjoy lunch at the restaurant Jósalur situated in the riding centre before or after the tour. Of course light refreshments are also available at the restaurant and bar.

Duration of this tour is 3 hours with 1^{1/2} - 2 hours riding. You can choose between a 10:00 and 14:00 departure (pick up from hotels and guesthouses at 9:00 and 13:00) and transfer back to hotels and guesthouses are at 12:15 and 16:15.

ADDI, AMOR, ASKJA AND THEIR FRIENDS ARE ALL WAITING TO MEET YOU!

For further information and booking call Íshestar Riding Centre 555 7000, or e-mail: info@ishestar.is Be sure to call ahead and make reservations.



Addi:

My name is Arnfinnur but my friends call me Addi. I like running around and playing with the other horses when I'm on vacation but I always handle my riders with great care. The last thing I want is to have them fall off.



Amor:

I'm a bit of a loner and I don't like goofing around. I mean after all I'm an adult! I try to be good to the horses that don't have many friends, they stay with me in the paddock and I teach them yoga and relaxation techniques, it is so good for the soul. My absolute favourite is working with the children in the riding school.



Askja:

I'm a bit strange in many ways, because I love to go very fast when my rider is advanced so it is difficult for those who know me that way to picture me with a beginner or a child. But I really like the children as well and my goal is to please my rider so I can also be very careful and calm.

**Welcome to Kaldárbotnsflugvöllur,
only one of many airports in Iceland.**

Expect delays.



Reykjavík: Smáralind, Kringlan, Bankastræti 5, Faxafen 12,
Miðhraun 11 Garðabær. **Akureyri:** Glerárgata 32
Keflavík: Airport and retailers across Iceland.

www.66north.com

Keeping Iceland warm
since 1926



Imagine Peace Tower

*“Imagine all the people
living life in peace”*

- John Lennon

The Imagine Peace Tower is a work of art conceived by the legendary artist, musician and peace advocate Yoko Ono as a beacon to world peace. The work is in the form of a wishing well from which a strong and tall tower of light emerges. The words ‘Imagine Peace’ are inscribed on the well in 24 world languages. The light tower is composed of a number of individual lights that join together to form a single beam. The strength, intensity and brilliance of the light tower continually changes as the particles in the air fluctuate with the prevailing weather and atmospheric conditions unique to Iceland.

Every year the Imagine Peace Tower will emerge between October 9th (Lennon’s birthday) and December 8th (the day of his death). In addition the Imagine Peace Tower will emanate on New Year’s Eve, during the first week of spring and on some rare special occasions agreed on by the artist and the City of Reykjavík. The electricity for the light comes entirely from Reykjavík Energy, which produces the electricity from geothermal power.

“I hope the Imagine Peace Tower will give light to the strong wishes of World Peace from all corners of the planet and give encouragement, inspiration and a sense of solidarity in a world now filled with fear and confusion. Let us come together to realize a peaceful world.”

- Yoko Ono

Reykjavík Whale Watching organizes Imagine Peace Tours to Videy Island Thursdays and Fridays at 20:00 until December 8th for minimum 6 persons. Departures from Skarfabakki pier in Sundahöfn harbour, Reykjavík.

For further information on the Imagine Peace Tower and on Viðey Island visit:

www.videy.com or call 533-5055. e-mail: elding@elding.is

So many things to do, so little time.



- » Have you enjoyed Iceland's surreal landscape? Been rafting? Raced a glacier on a snowmobile? Relaxed in a geothermal spa? Stayed up until the early hours at one of Reykjavik's nightclub?

Don't worry if you run out of time, because you can always come back, thanks to Iceland Express and our affordable air-fares to Iceland from several destinations across Europe.

» PRICES FROM

£69/€99

One way
incl. taxes.

» CHILD DISCOUNT

50% **

» www.icelandexpress.com

Iceland Express



Your Guide to an Icelandic Winter

There is more to do from November to April than sit inside and drink Viking beer. Stop worrying whether you're going to get frostbite and go outside. It will make winter's creature comforts all the sweeter.

Gliding along the Pond

There's an advantage to the cold that winter brings: outdoor fun. On and off during the winter months, depending on the weather, the calm waters of the Tjörnin pond in the centre of Reykjavik freeze over, leaving only one small gap, thanks to the thermal waters, of tepid water for the ducks and swans to bathe in.

For kids and kids-at-heart, part of the frozen pond is cleared of snow each year to create a small area for skaters to practice their art. Figure skaters and Wayne Gretzky wannabes are all welcome here, to swoosh by on the ice under a sky dancing with the Northern Lights.

The Alps of the Arctic

Bláfjöll is 30 minutes from the capital is the biggest ski area in Iceland, and it is quite good in the spring. Cheap rentals, and 14 lifts.

Skálafell is 40 minutes from Reykjavik. Smaller, but on a good day, not as crowded. Close to Mt. Esja – the mountain that gives Reykjavik its view.

Hlíðarfjall in Akureyri is the best ski area in Iceland, with good, stable snow conditions and quick lifts. Here is where the future champions train.

Siglufjörður up north is my favourite, with its long, steep, high-altitude runs and a fantastic view over the small, picturesque bay.

Tindastóll near Sauðárkrúkur, also in the north, normally opens before Siglufjörður in November, and it closes last in April.

Ísafjörður used to have one of the best ski areas in Iceland until an avalanche destroyed it a few years back. The smaller rebuilt ski area in the West Fjords still has some good lifts, as does Oddskarð in the East Fjords, which provides nice views as a bonus.

Be Careful Out There

Check out the website for the Public Roads Administration (www.vegagerdin.is) for all the information you'll need on what roads are open, weather forecasts, and an overview of Icelandic road signs. You can also call 1777 for up-to-the-minute advice on conditions. Now you can head out on the open road – and enjoy it!

Snuggle Up

December in Reykjavik: Do you picture cold, dark nights spent shivering at home dreaming of the tropics? If you do, you'd be wrong (except for the dark part). Icelanders know how to stay snug and warm during the long cold season.

One of the country's old secrets is eiderdown. It's been used in Iceland for well over a hundred years. A luxury item around the world, eiderdown is hand collected from eider birds' nests in the West and East Fjords and used to make comforters, pillows, and other crucial items for keeping you warm. Icelanders are the experts on eiderdown not



Tjörnin Pond down town Reykjavik.



The swimming pool in Akureyri

only because it is collected here, but also because it is about half the price it is in the rest of the world – not to mention the old “tax free” gem for non-residents.

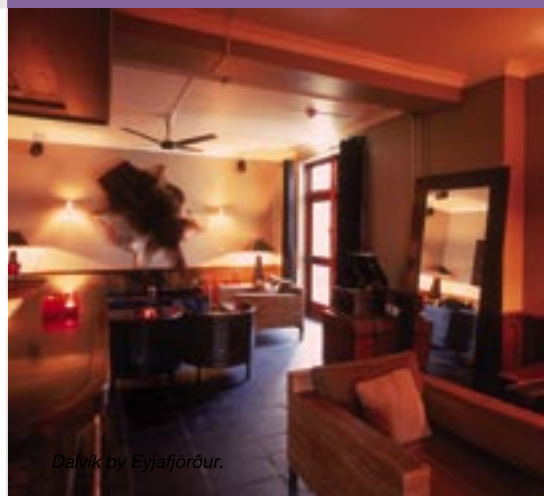
Into the Woods

Summer is the famous season for getting back to the country in Iceland, but the small hotels scattered throughout the countryside make a weekend in the winter possible – and a good way to get out of the rut of city livin’. As more people are venturing outside the capital to explore the country in freezing temperatures, more of the classic country hotels are staying open for the pre-Christmas season.

Less than an hour’s drive from the city, Hotel Valhöll is a good choice for a chilly out-of-town weekend. You can go for a bracing walk around the frozen shores of Lake Thingvallavatn, or take an afternoon drive in the dusky wilderness. If you prefer to take advantage of what Icelanders optimistically refer to as ‘window weather’, bring your book and stake out a spot at the bar with a hot toddy or hot chocolate – or both.

Swimming

Icelanders are famous for their heated pools but have an aversion to swimming in the frigid waters that surround them. They didn’t even catch the swimming bug until the 20th century, after the government built pools around the country and mandated swimming lessons in response to fishermen drowning.



Dalyk by Eyjafjörður.

Hótel Valhöll in Þingvellir.





event calendar

what // where // when

How to locate events Example: *Reykjavik Art Museum – Hafnarhús (C-2)* = → (Compare this to the map of Reykjavik at the back of What's On. Also check out listings in the Culture & Arts section pg. 26)

NOVEMBER 2007



Reykjavik Art Museum - Kjarvalsstaðir (E-4)

● **Reykjavik Art Museum, Kjarvalsstaðir: Eggert Pétursson.**

Exhibitions

● **Eggert Pétursson**

The delicate yet rugged plants of Iceland's wilds cover the surface of Eggert Pétursson's paintings. The works, rendered with exceptional precision, invite the viewer to ponder the beauty dwelling in each square foot of countryside. The present exhibit spans Eggert Pétursson's career from start to present and includes some works never before seen by the public eye. The works are on loan from private collectors, companies and public museums. A lavish book on the painter Eggert Pétursson will accompany the exhibition. Curated by Ólöf K. Sigurðardóttir. On display until 04.11

Architecture at Eye Level

The man-made environment of architecture is an important part of our daily lives. A form of artistic expression on a par with literature, visual arts, and music, architecture must nonetheless take into account variables that are neither aesthetic nor matters of fancy. In this exhibition, works selected from the Icelandic environment

convey important aspects of the art of architecture. Guests are invited to experience the exhibition in diverse ways, and may even choose to try their hands at its design and creation. The exhibition marks the publication of a new book intended to increase awareness of architecture, a dual initiative of the Association of Icelandic Architects and the Curriculum Institute. Guja Dögg Hauksdóttir, head of the Reykjavik Art Museum's architecture department, is author of the book and curator of this exhibition. On display until 31.12



event calendar

what // where // when

Meditation on Furniture

Architect and furniture designer Óli Jóhann Ásmundsson has earned particular renown as a designer of "collapsible" furniture. In the present exhibit, in the west hall of Kjarvalsstaðir, Óli Jóhann Ásmundsson shows new furniture in diverse and surprising permutations. On display until 31.12

Jóhannes Sveinsson Kjarval

An exhibition highlighting key works by Kjarval from the Reykjavik Art Museum collection. On display until 31.12

Birgir Snæbjörn Birgisson – Miss World

The idea and ideology behind the stereotype of the blonde have provided food for thought to painter Birgir Snæbjörn Birgisson during the last decade. His newest series takes on Miss World. The contest for the world's most beautiful maiden was established in 1951, and Birgir Snæbjörn Birgisson has painted portraits of winning contestants from nearly every year. The series made its debut appearance in Gautaborg in 2007 and will travel on to London from Reykjavik. On display until 13.01.08

Reykjavik Art Museum - Hafnarhús (C-2)

Exhibitions

● **Hreinn Friðfinnsson**

Hreinn Friðfinnsson lives in Holland and has exhibited widely in Europe, where he has earned distinction for his poetic conceptual work. Hreinn co-founded the SÚM movement in 1965 and is one of Iceland's leading conceptual artists. The present exhibition spans Hreinn Friðfinnsson's four-decade career, including his exhibition at London's Serpentine Gallery in the summer of 2007. His work is shaped by his fascination with nature and with visual experience. The present exhibition includes photography, three-dimensional works, and drawings, as well as installations. Curated by Kitty Scott. On display until 31.12



● **Reykjavik Art Museum – Hafnarhús: Hreinn Friðfinnsson.**

● **Margrét Blöndal**

Margrét Blöndal earned her MFA degree in visual art from Rutgers University in 1997 and has been a force abroad as well as in Iceland. Since her professional debut in 1994 she has shown her work in more than a dozen one-artist shows and upwards of forty group exhibitions. For the current exhibition at Hafnarhús, Margrét Blöndal has created new works tailored to the gallery space. On display until 31.12



● **Reykjavik Art Museum – Hafnarhús:**
Margrét Blöndal

● **D6 Karlotta Blöndal**

Karlotta Blöndal's career is young but noteworthy. Working both in Iceland and Sweden, she has sparked interest with installations and artworks based on drawings and texts. Her work examines contemporary images through the interpretation and symbols of history. Curated by Ólöf K. Sigurðardóttir. On display until 31.12

The Erró Collection

Works from the museum's Erró collection.



● **Reykjavik Art Museum – Hafnarhús:**
Karlotta Blöndal